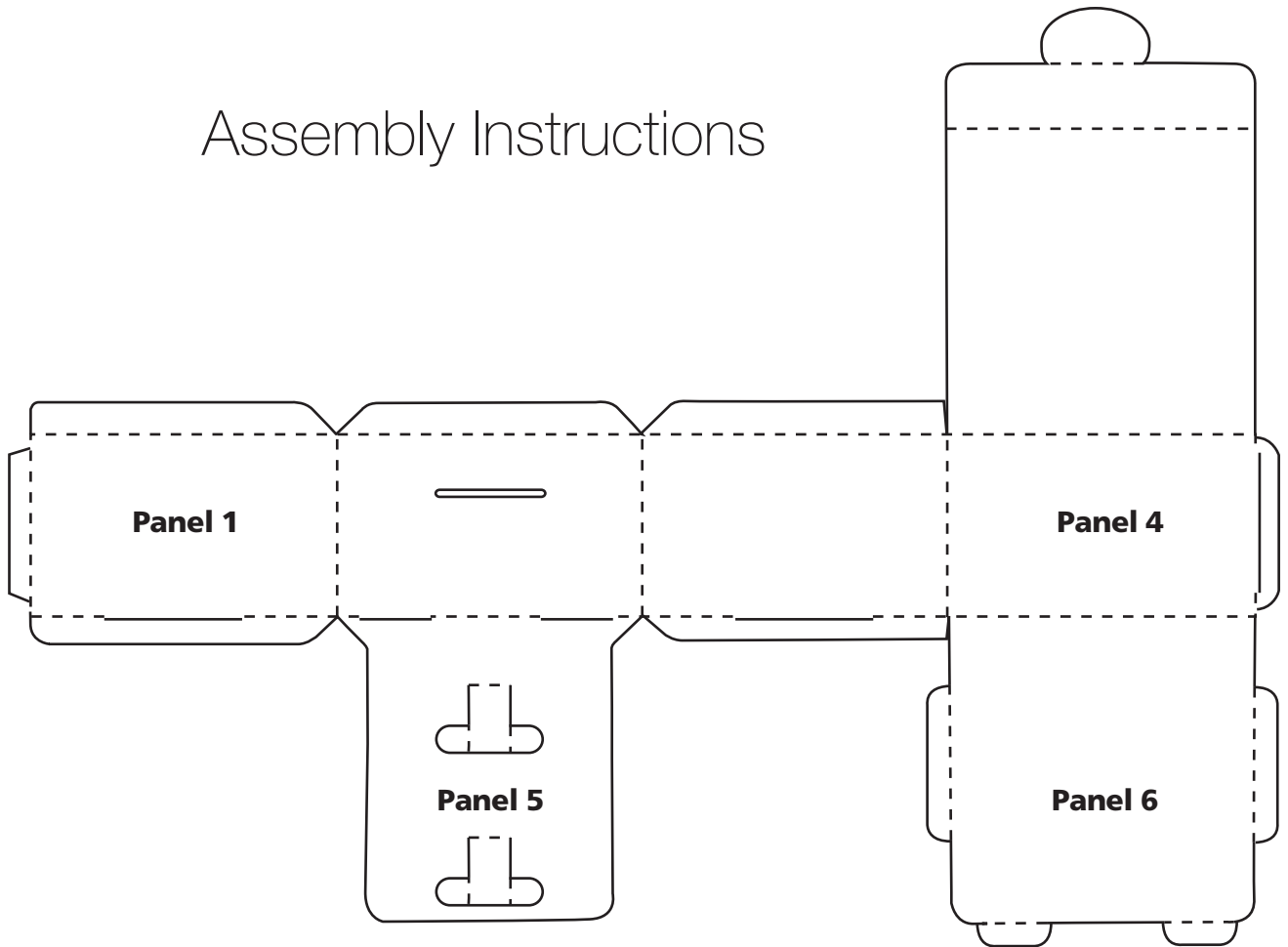




pinklily™ mini-lily

Assembly Instructions



Step 1

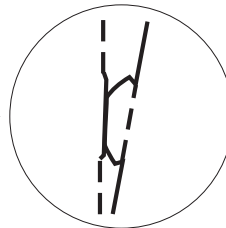
Lay the box flat with the smooth side facing up

Step 2

Fold every crease inwards

Step 3

Join panel 1 and 4 by inserting the tab into the slot in the corner →



Step 4

Fold Panel 5 under and close panel 6 to form the bottom of the box

Step 5

Close the lid.